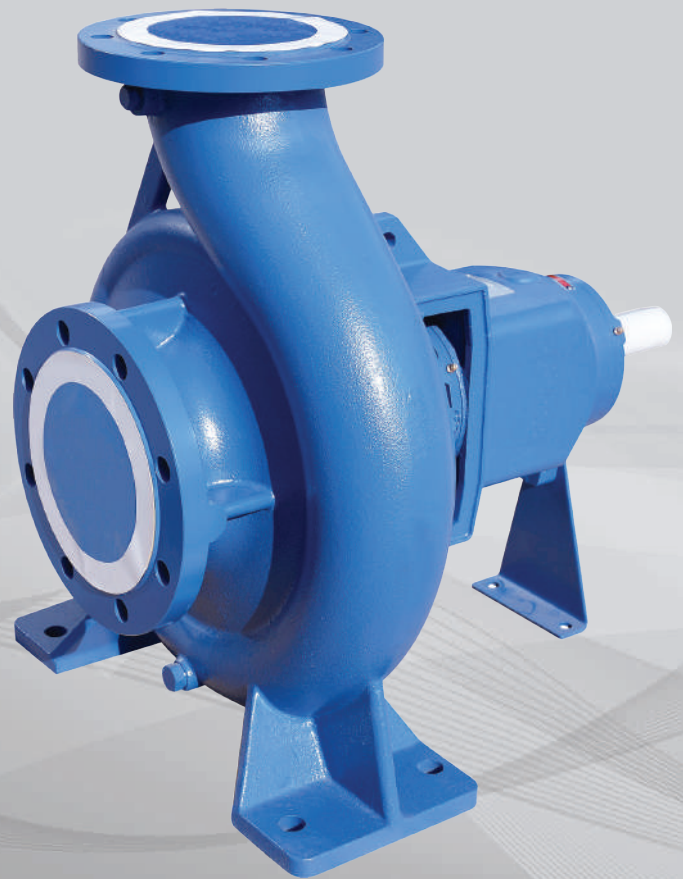




HORIZONTAL END SUCTION PUMP DIN 24255

GU, GUM Series 50Hz/60Hz



Application

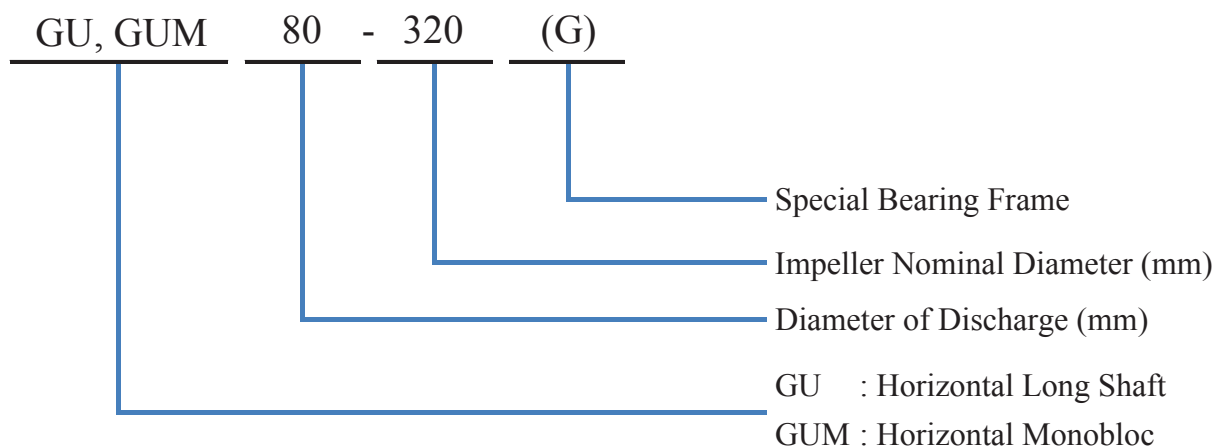
- Water Supply
- Hot & Cold Water Circulation
- Fire Fighting
- Air Conditioning
- Irrigation Use
- Drainage
- General Industry
- Power Plant



Features

- Disassembly Back Pull Out (B.P.O) design allows all rotating element to be removed without disconnecting pipeworks.
- High efficiency closed type impeller design, stable operation and lower operating cost.
- A wide range of performance with head up to 150m.
- Performance and dimension comply to European Standard BS EN733 / DIN 24255.
- Suction and discharge flange in conformity with PN standard.
- High quality mechanical seal to ensure a maximum pumping temperature of 105 degrees Celsius.

Model Identification

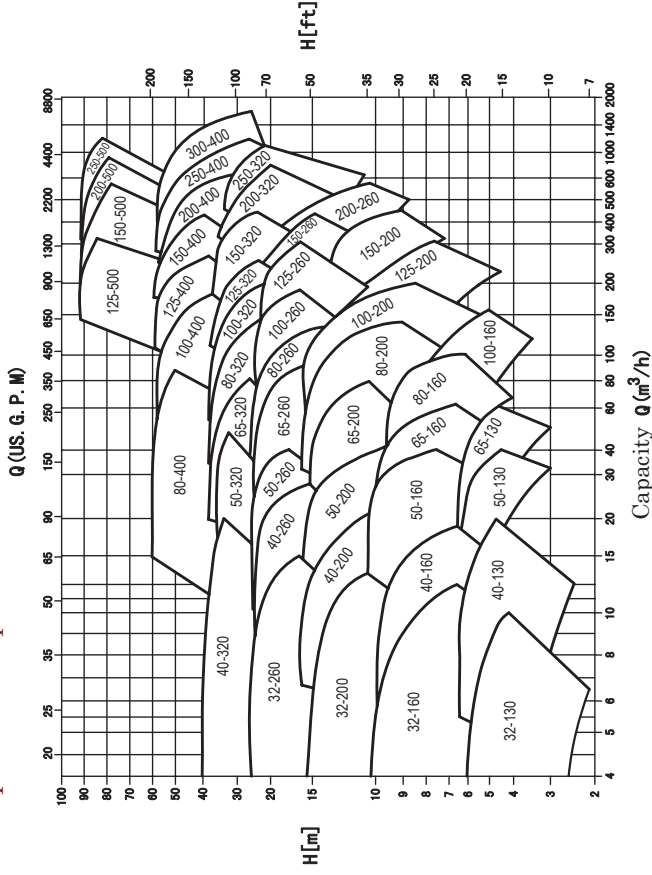
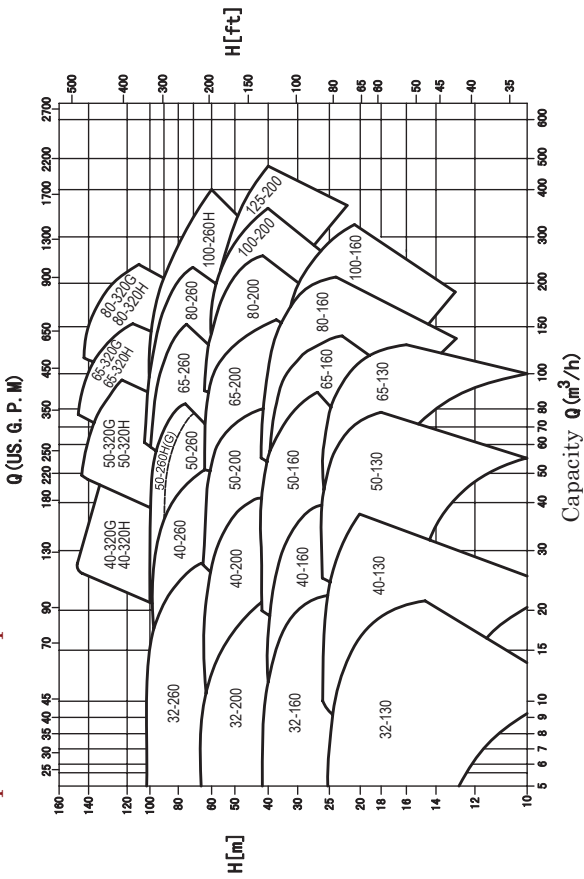


50Hz (Speed: 2900rpm)

2 Poles

50Hz (Speed: 1450rpm)

4 Poles

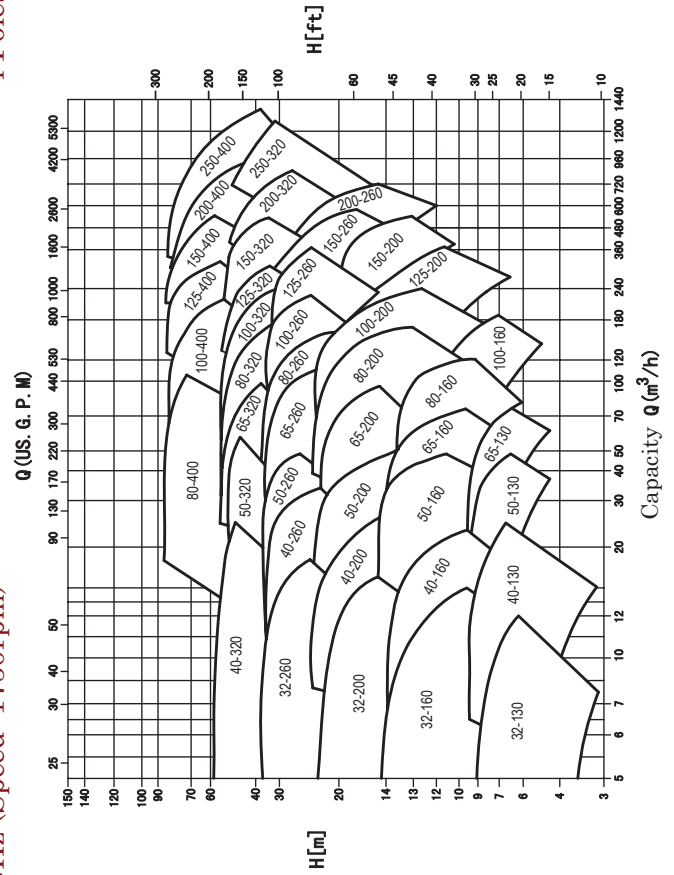
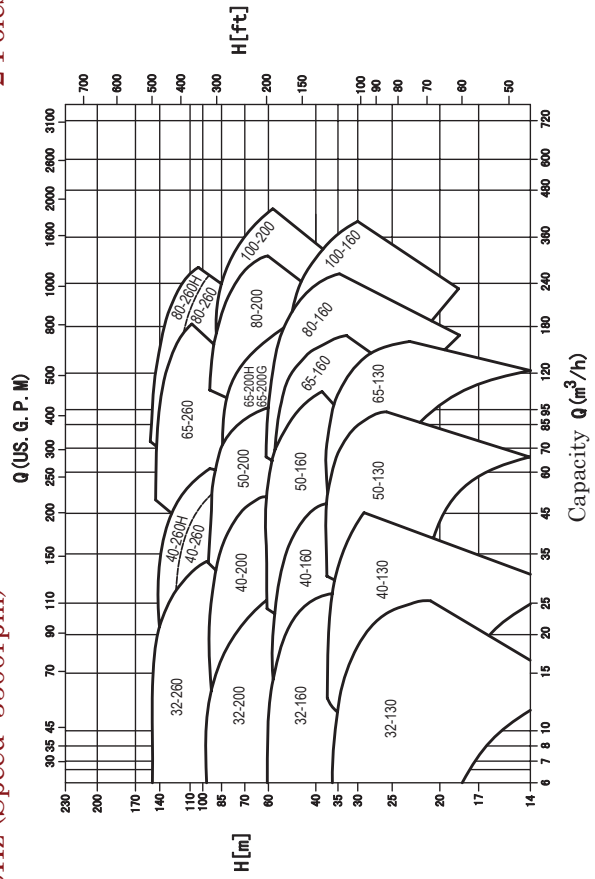


60Hz (Speed: 3500rpm)

2 Poles

60Hz (Speed: 1750rpm)

4 Poles

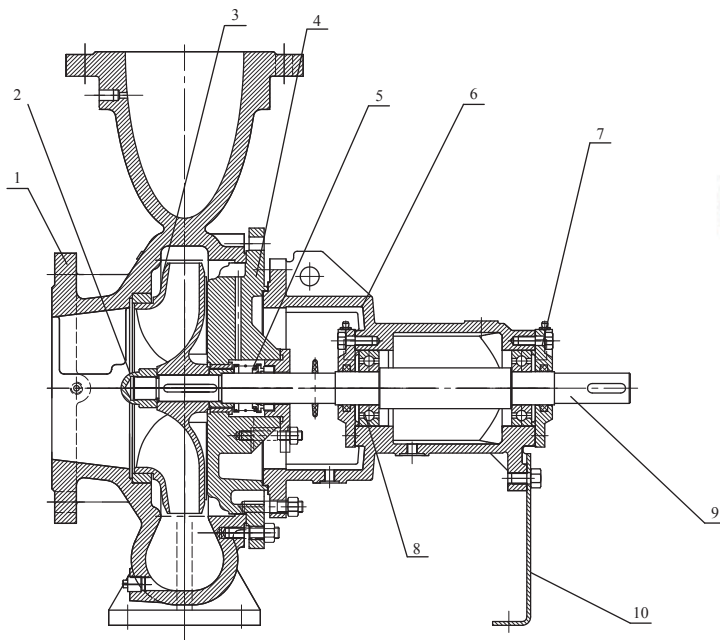


Specification

Description		Standard	Optional
Model		GU, GUM	
Pumping Medium		Clean Water, Industrial Water	
Temperatures		≤ 105 °C	
Allowable Working Pressure		1.0 MPa	1.6 MPa on request
Material	Casing	Cast Iron	Ductile Cast Iron, Stainless Steel 304, 316, Duplex Stainless Steel
	Impeller	Bronze	Cast Iron, Stainless Steel 304, 316, Duplex Stainless Steel
	Shaft	Stainless Steel 420	Stainless Steel 304, 316, Duplex Stainless Steel
	Case Wear Ring	Bronze	Stainless Steel 304, 316, Duplex Stainless Steel
	Mechanical Seal	Carbon/Ceramic	SiC/SiC or Tungsten Carbide/Tungsten Carbide
	Ball Bearing	Steel	
Optional Accessories		Electric motor, common base, anchor bolts, shaft coupling, coupling guard.	

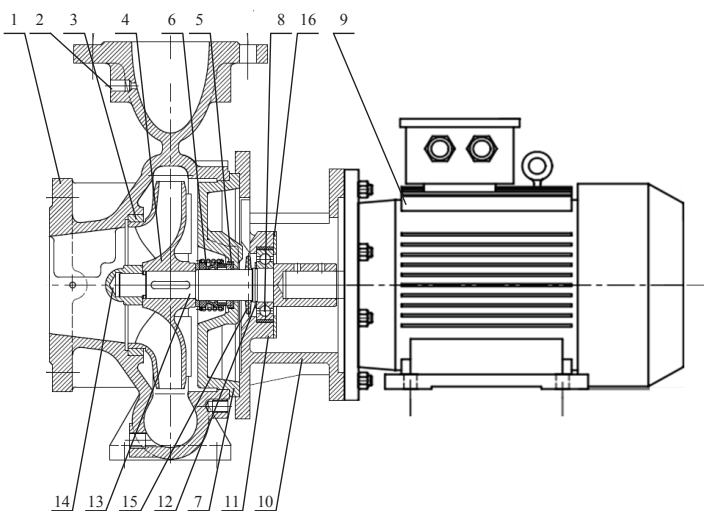
Sectional View

Long Shaft End Suction Pump - GU Series



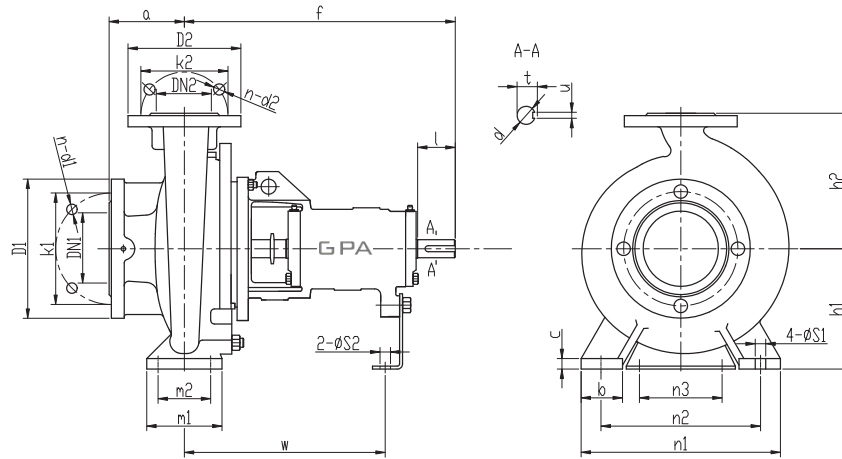
Code	Part Name
1	Casing
2	Impeller Nut
3	Impeller
4	Casing Cover
5	Mechanical Seal
6	Bearing Housing
7	Bearing Cover
8	Bearing
9	Shaft
10	Support Foot
11	Packing Sleeve
12	Seal Cage
13	Gland Packing
14	Gland Cover

Monobloc End Suction Pump - GUM Series



Code	Part Name	Code	Part Name
1	Volute Casing	9	IEC Standard Motor
2	Screw Plug	10	Adapter
3	Wear Ring	11	Flexible Washer
4	Impeller	12	Circlip For Shaft
5	Seal Seat	13	Shaft
6	Mechanical Seal	14	Impeller Nut
7	Casing Cover	15	Slinger
8	Bearing	16	Bearing Cover

Bareshaft Pump Dimension

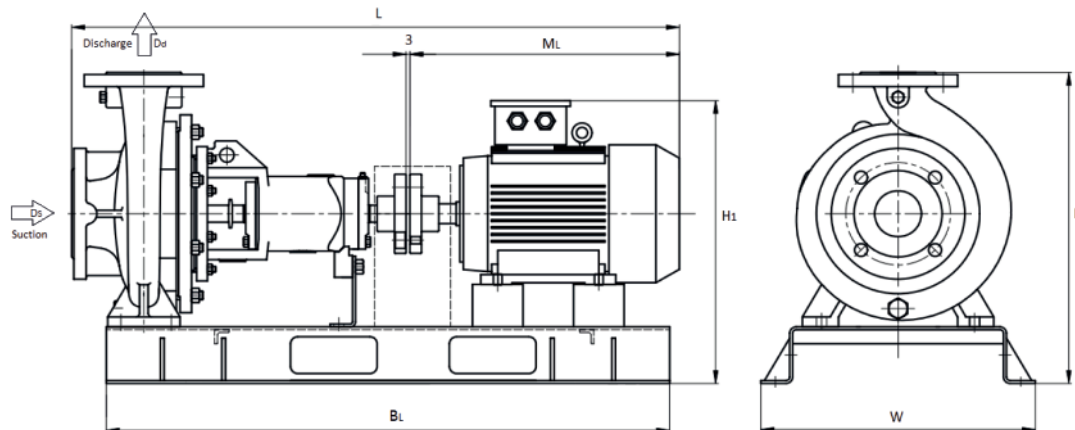


Model	Bearing Size	DN2	DN1	a	f	h1	h2	b	c	n3	m1	m2	n1	n2	S1	S2	w	d	l	t	u	Weight (Kg)													
GU 32-130	25	32	50	80	360	112	140	50	14	100	100	70	190	140	14	14	267	24	50	27	8	29													
GU 32-160						132	160						240	190								35													
GU 32-200						160	180						240	190								47													
GU 32-260						180	225						320	250								58													
GU 40-130						112	140						210	160								31													
GU 40-160	80	40	100	360	132	160	50	100	100	70	240	190	34																						
GU 40-200	160				180	265	212	45																											
GU 40-260(H)	180				225	320	250	61																											
GU 40-320	200				250	345	280	94																											
GU 40-320(H)	200				250	345	280	107																											
GU 40-320G	45	65	125	470	526	200	250	65	14	110	125	95	345	280	14	14	342	32	80	35	10	105													
GU 50-130	132				160	240	190						35																						
GU 50-160	160				180	265	212						39																						
GU 50-200	160				200	320	250						49																						
GU 50-260(H)	180				225	345	280						68																						
GU 50-260G	35	50	100	470	225	280	65	18	110	125	95	345	280	14	14	344	32	80	35	10	65														
GU 50-320(H)	225				280	345	280					113																							
GU 50-320G	45				50	65	526					225	280								18	125	95	345	280	105									
GU 65-130	25				65	80	100					360	160								180	65	14	125	95	280	212	14	14	267	24	50	27	8	41
GU 65-160												160	200								320	250	47												
GU 65-200(H)		465	180	225				320	250	55																									
GU 65-200G		470	200	250				360	280	87																									
GU 65-260		470	225	280				80	15	342	32	80	35	10	110																				
GU 65-320(H)	525	225	280	18	367	42	110	45	12	120																									
GU 80-160	25	80	100	125	360	180	225	65	14	125	95	320	250	14	14	267	24	50	27	8	53														
GU 80-200	180				250	345	280	76																											
GU 80-260	470				200	280	80	15	342			32	80								35	10	95												
GU 80-320(H)	250				315	80	16	367	42			110	45								12	118													
GU 80-320G	526				280	355	83	18	370			42	110								45	12	130												
GU 80-400	530	280	355	83	18	370	42	110	45	12	160																								
GU 100-160	35	100	125	140	200	250	80	15	110	160	120	360	280	18	18	342	32	80	35	10	87														
GU 100-200	470				225	280	80	16				342	32								80	35	10	84											
GU 100-260(H)	250				315	400	315	102																											
GU 100-320	530				280	355	100	20				370	42								110	45	12	118											
GU 100-400	530				280	355	100	20				370	42								110	45	12	176											
GU 125-200	35	125	150	140	470	250	315	80	16	160	120	400	315	18	18	342	32	80	35	10	112														
GU 125-260	250				355	400	315	117																											
GU 125-320	530				280	355	18	370	42			110	45								12	155													
GU 125-400	315				400	25	500	48	110			51	14								300														
GU 125-500	670				355	450	550	450	342			32	80								35	10	132												
GU 150-200	35	150	200	160	500	280	400	100	18	200	150	400	315	23	23	342	32	80	35	10	163														
GU 150-260	250				355	400	315	170	170			600	480								286														
GU 150-320	530				280	400	315	450	450			500	48								110	51	14	330											
GU 150-400	315				450	22	392	42	45			12	219																						
GU 150-500	670				375	500	70	315	480			120	32								286														
GU 200-260	45	200	250	180	555	315	450	120	20	140	200	150	660	560	23	19	515	60	140	64	18	450													
GU 200-320	670				315	480	120	20	220				170	600	480	28	19	515	60	140	64	18	550												
GU 200-400	335				480	250	250	300	350				520	150	26	110	250	200	660	510	28	14	525	48	110	51	14	366							
GU 200-500	65				200	250	200	720	425				560	100	22	140	200	150	660	560	23	19	515	60	140	64	18	450							
GU 250-320	55				250	300	220	691	355				520	150	26	110	250	200	660	510	28	14	525	48	110	51	14	366							
GU 250-400	65	250	300	250	720	450	670	120	32	140	250	190	750	650	23	19	515	60	140	64	18	550													
GU 300-400	65	300	350	300	720	425	670	120	30	140	250	190	760	660	30	19	515	60	140	64	18	550													

ISO7005.2 DIN2501 PN16												
DN1/DN2	32	40	50	65	80	100	125	150	200	250	300	350
D1/D2	140	150	165	185	200	220	250	285	340	405	460	520
K1/K2	100	110	125	145	160	180	210	240	295	355	410	470
n-d1 / n-d2	4- 18	4- 18	4- 18	4- 18	8- 18	8- 18	8- 18	8- 22	12- 22	12- 26	12- 26	16- 26

*All dimension in mm and for reference only, subject to change without prior notice.

General Arrangement Dimension



Pump Model	Motor		Flange Size		Dimension						Weight										
	kW	Poles	Ds	Dd	Bl	ML	L	W	H1	H	kg										
GU 32-130	0.75	2	50	32	720	360	360	332	332	332	61										
	1.1										295	738	332	62							
	1.5										320	763	352	66							
	2.2										345	788	400	70							
	0.55										295	738	332	61							
GU 32-160	1.5	2			50	32	720	360	360	372	372	372	72								
	2.2												320	763	382	76					
	3												345	788	400	94					
	4												385	828	400	93					
	5.5												400	843	430	122					
	0.55		470	913									360	67							
	0.75		295	738									360	68							
GU 32-200	4	2	50	32			720	360	360	428	420	420	105								
	5.5												400	843	430	136					
	7.5												780	470	913	453	140				
	11				950	615							1058	500	184						
	0.55				720	295							738	380	79						
GU 32-260	0.75	4			50	32	720	360	360	400	485	485	80								
	1.1												320	763	400	85					
	15												615	1080	430	198					
	18.5												670	1135	430	199					
	1.5												345	810	420	103					
GU 40-130	2.2	2	65	40			720	360	360	332	332	332	68								
	3												345	788	362	72					
	4												385	828	380	90					
	0.55												400	843	332	88					
	295												738	332	63						
	GU 40-160				3	2	65	40	720	360	360	372	372	372	93						
					4										385	828	400	92			
					5.5										400	843	400	121			
					7.5										780	470	913	425	125		
					0.55										720	295	738	352	66		
0.75		320			763										372	72					
1.1		320			763										372	72					
GU 40-200	1.1	4			65	40			720	360	430	453	420	420	134						
	5.5														780	470	933	430	138		
	7.5														950	615	1078	500	182		
	11														720	295	758	380	78		
	0.75														320	783	360	83			
GU 40-260	1.1	2							65	40	950	430	520	485	485	485	87				
	15																615	1080	430	201	
	18.5																670	1135	480	202	
	22		700	1166													480	225			
	1.5		345	810													420	256			
GU 40-320G	2.2	4	65	40							720	360	430	453	420	420	106				
	3																385	850	360	113	
	30																1120	770	1425	520	585
	37						1200	770									1425	520	530		
	45						1300	815									1470	570	640		
GU 40-320H	22	2					65	40			1200	520	585	530	530	530	377				
	30																1120	770	1299	555	298
	37																1200	770	1369	520	585
	45																1300	815	1414	570	640
	3																385	983	450	164	
GU 40-320	4	4			65	40					950	480	480	468	530	530	174				
	5.5																400	998	468	193	
	7.5																470	1068	493	193	
	3																510	1108	206		
	4																385	848	360	382	
GU 50-130	4	2							65	50	720	360	430	425	372	372	94				
	5.5																400	863	400	93	
	7.5																780	470	933	430	122
	0.55																720	295	758	352	67
	0.75																720	295	758	360	68
GU 50-160	1.1	4	65	50							720	360	360	372	372	372	73				
	3																320	783	372	73	

Pump Model	Motor		Flange Size		Dimension						Weight						
	kW	Poles	Ds	Dd	Bl	ML	L	W	H1	H	kg						
GU 50-160	4	2	65	50	720	400	863	430	428	420	97						
	5.5										470	933	453	128			
	7.5										950	615	1078	500	132		
	11										720	295	758	380	176		
	0.55										320	783	360	71			
GU 50-200	0.75	4			65	50	720	360	360	400	440	440	72				
	1.1												345	808	400	77	
	1.5												345	808	400	81	
	7.5												780	470	936	453	142
	11												950	615	1081	500	186
	15		670	1136									430	187			
	18.5		320	786									360	210			
GU 50-260G	1.1	4	65	50			720	360	430	400	440	440	87				
	1.5												345	811	410	91	
	2.2												385	851	410	98	
	30				1120	700							1274	535	265		
	37				1200	770							1344	520	341		
GU 50-260H	37	2			65	50	1120	520	520	585	505	505	351				
	18.5												1120	770	1237	520	352
	22												670	1136	430	520	232
	30												950	700	1167	480	535
	37												1120	770	1237	520	342
GU 50-260	3	4	65	50			780	385	851	430	448	485	123				
	4												400	866	430	133	
	5.5												950	470	936	473	165
	30												1200	770	1425	520	381
	37												1300	815	1470	570	391
GU 50-320G	45	2			65	50	1360	630	630	695	610	610	450				
	55												1450	985	1565	630	567
	75												1450	985	1640	670	685
	30												1200	770	1344	520	376
	37												1300	825	1389	570	386
GU 50-320H	45	2	65	50			1360	630	630	695	610	610	445				
	55												1450	985	1559	670	562
	75												1450	985	1640	760	680
	30												1200	770	1344	520	376
	37												1300	825	1389	570	386
GU 50-320	45	4			65	50	1360	630	630	695	610	610	445				
	55												1450	985	1559	670	562
	75												1450	985	1640	760	680
	30												1200	770	1344	520	376
	37												1300	825	1389	570	386
GU 65-130	45	2	80	65			1360	630	630	695	610	610	445				
	55												1450	985	1559	670	562
	75												1450	985	1640	760	680
	30												1200	770	1344	520	376
	37												1300	825	1389	570	386
GU 65-160	45	4			80	65	1360	630	630	695	610	610	445				
	55												1450	985	1559	670	562
	75												1450	985	1640	760	680
	30												1200	770	1344	520	376
	37												1300	825	1389	570	386
GU 65-200	45	2	80	65			1360	630	630	695	610	610	445				
	55												1450	985	1559	670	562
	75												1450	985	1640	760	680
	30												1200	770	1344	520	376
	37												1300	825	1389	570	386
GU 65-260	45	4			80	65	1360	630	630	695	610	610	445				
	55												1450	985	1559	670	562
	75												1450	985	1640	760	680
	30												1200	770	1344	520	376
	37												1300	825	1389	570	386
GU 65-320G	45	2	80	65			1360	630	630	695	610	610	445				
	55												1450	985	1565	630	549
	75												1450	985	1640	760	680
	30												1200	770	1344	520	376
	37												1300	815	1389	570	386
GU 65-320H	45	4			80	65	1360	630	630	695	610	610	445				
	55												1450	985	1565	630	549
	75												1450	985	1640	760	680
	30												1200	770	1344	520	376
	37												1300	815	1389	570	386

*All dimension in mm and for reference only, subject to change without prior notice.

Pump Model	Motor		Flange Size		Dimension							Weight		
	kW	Poles	Ds	Da	B	ML	L	W	Hi	H	kg			
GU 65-320H	45	2	80	65	1300	815	1414	570	640	585	455			
	55				1360	910	1509	630	695	610	572			
	75				1450	985	1584	670	760	640	690			
	90					1035	1634				746			
GU 65-320	5.5	4			100	80	1120	470	1068	520	585	518	215	
	7.5							510	1108			228		
	11							615	1213			258		
	15							670	1268			278		
GU 80-160	11	2	125	100			950	615	1103	430	520	485	193	
	15							700	1189				217	
	18.5							700	1189				248	
	22	4					780	345	833	430	430	420	98	
	1.5				385	873		105						
	2.2				400	998		108						
GU 80-200	3	2	150	80	1120	700	1299	520	535	510	276			
	22					1200	770				1369	585	530	352
	30					1300	815				1414	570	640	555
	37	4			950	385	983	480	448	430	146			
	45					400	998			473	156			
	55					470	1068			473	175			
GU 80-260	7.5	2	200	100	1300	770	1369	570	585	560	389			
	11					815	1414				640	585	446	
	15					910	1509				630	695	610	557
	22	4			1120	400	998	520	493	468	182			
	30					470	1068			560	200			
	37					510	1108			560	213			
GU 80-320G	45	2	250	100	1450	985	1640	670	760	675	710			
	55					1025	1690				766			
	75					1185	1840				1138			
	90	4			1120	400	998	520	540	468	182			
	110					470	1068			560	200			
	132					510	1108			560	213			
GU 80-320H	132	2	300	100	1450	985	1640	670	760	675	710			
	132					1025	1690				766			
	132					1185	1840				1138			
	132	4			1120	400	998	520	540	468	182			
	132					470	1068			560	200			
	132					510	1108			560	213			
GU 80-320	7.5	2	350	100	1450	985	1640	670	760	675	710			
	11					1025	1690				766			
	15					1185	1840				1138			
	15	4			1120	510	1108	520	543	232				
	18.5					615	1213			262				
	22					670	1268			282				
GU 80-400	18.5	2	400	100	1300	700	1299	570	620	715	354			
	22					700	1369				635	383		
	30					740	1399				404			
	30	4			1120	670	1329	520	605	354				
	37					700	1299			635	383			
	45					740	1399			404				
GU 100-160	15	2	450	100	1120	615	1213	520	543	645	232			
	18.5					670	1268				590	262		
	22					700	1299				605	320		
	30	4			1300	670	1329	570	620	354				
	37					700	1299			635	383			
	45					740	1399			404				
	GU 100-200	30	2	500	100	1120	615	1213	520	543	645	232		
		37					670	1268				590	262	
		45					700	1299				605	320	
		55	4			1300	670	1329	570	620	354			
		75					700	1299			635	383		
		75					740	1399			404			
GU 100-260H		75	2	550	100	1120	615	1213	520	543	645	232		
		110					670	1268				590	262	
		132					700	1299				605	320	
		132	4			1300	670	1329	570	620	354			
		132					700	1299			635	383		
		132					740	1399			404			
	GU 100-320	15	2	600	100	1120	615	1213	520	543	645	232		
		18.5					670	1268				590	262	
		22					700	1299				605	320	
		30	4			1300	670	1329	570	620	354			
		37					700	1299			635	383		
		45					740	1399			404			
GU 100-400		30	2	650	100	1120	615	1213	520	543	645	232		
		37					670	1268				590	262	
		45					700	1299				605	320	
		55	4			1300	670	1329	570	620	354			
		75					700	1299			635	383		
		75					740	1399			404			

Pump Model	Motor		Flange Size		Dimension							Weight		
	kW	Poles	Ds	Da	B	ML	L	W	Hi	H	kg			
GU 125-200	45	2	150	125	1300	815	1429	570	665	645	480			
	55				1360	910	1524	630	695	645	567			
	75				1450	985	1599	670	760	675	692			
	90					1035	1634				746			
GU 125-260	5.5	4			200	150	1120	470	1083	520	590	645	217	
	7.5							510	1123				230	
	11							615	1228				260	
	15							670	1283				285	
GU 125-320	11	2	250	150			1120	670	1283	520	590	685	265	
	15							700	1314				605	323
	18.5							740	1354				345	
	22	4					1360	670	1343	630	635	715	346	
	30				700	1374		384						
	37				740	1414		406						
GU 125-400	30	2	300	200	1360	770	1444	630	665	700	467			
	45					770	1464				700	490		
	55					820	1514				730	568		
	75	4			1450	845	1539	670	730	795	579			
	90					910	1604				650			
	110					1450	985				1679	795	830	
GU 125-500	110	2	350	200	1650	985	1819	730	835	885	965			
	132					1035	1869				1008			
	160					1215	2049				1297			
	160	4			1740	1325	2159	700	1000	920	1440			
	180					1810	1485							
	180					1810	1485							
GU 150-200	11	2	400	150	1120	615	1275	520	620	760	280			
	15					670	1361				635	341		
	18.5					700	1819				590	348		
	15	4			1300	700	1393	570	605	685	386			
	22					740	1434				407			
	30					770	1464				468			
GU 150-260	22	2	450	150	1450	740	1439	670	635	760	427			
	30					770	1469				665	488		
	37					820	1519				695	566		
	45	4			1650	845	1544	730	835	885	578			
	55					910	1609				725	648		
	75					985	1679				795	830		
GU 150-320	75	2	500	150	1450	985	1679	670	795	830	965			
	90					1035	1869				1008			
	110					1215	2049				1297			
	132	4			1740	1325	2159	700	1000	920	1440			
	160					1810	1485							
	180					1810	1485							
GU 150-400	11	2	550	150	1120	615	1275	520	620	760	280			
	15					670	1361				635	341		
	18.5					700	1819				590	348		
	15	4			1300	700	1393	570	605	685	386			
	22					740	1434				407			
	30					770	1464				468			
GU 150-500	22	2	600	150	1450	740	1439	670	635	760	427			
	30					770	1469				665	488		
	37					820	1519				695	566		
	45	4			1650	845	1544	730	835	885	578			
	55					910	1609				725	648		
	75					985	1679				795	830		
GU 150-500	75	2	650	150	1450	985	1679	670	795	830	965			
	90					1035	1869				1008			
	110					1215	2049				1297			
	132	4			1740	1325	2159	700	1020	990	1328			
	160					1810	1485							
	180					1810	1485							
GU 200-260	18.5	2	700	200	1450	700	1439	730	670	845	455			
	22					740	1479				700	476		
	30					770	1509				700	537		
	30	4			1650	770	1624	730	730	875	617			
	37					820	1674				696			
	45					845	1539				707			
55	4	1740	910	1764	670	760	845	777						
75			985	1839				795	859					
90			1035	1889				855	1029					
GU 200-320	90	2	750	200	1450	820	1514	670	695	760	566			
	110					845	1544				578			
	132					910	1609				725	648		
	110	4			1740	820	1514	730	730	875	603			
	132					845	1539				615			
	160					910	1604				685			
200	4	1810	985	1679	730	855	955	1029						
250			1740	1215				2069	1328					
315			1810	1325				2179	1471					
GU 200-400	18.5	2	800	200	1450	700	1439	730	670	845	455			
	22					740	1479				700	476		
	30					770	1509				700	537		

Australia (Head Office)

GPA Pumps Pty Ltd

L23,127 Creek Street,
Brisbane QLD 4000

Tel: +617 3218 1210

Website: www.gpapumps.com

Email: info@gpapumps.com

Singapore

GPA Engineering Corporation Pte Ltd

20 Woodlands Link,
#02-30 Singapore 738733

Tel: +65 6265 2282 Fax: +65 6265 2292

Website: www.gpaengrg.com

Email: info@gpaengrg.com

Malaysia

GPA Pumps (M) Sdn Bhd

(formerly known as Pompe GPA (M) Sdn Bhd)

10-23A, Plaza Azalea,
Persiaran Bandar Raya,
40000 Shah Alam,

Selangor Darul Ehsan, Malaysia.

Tel: +603 5524 1313 Fax: +603 5524 1331

Website: www.gpapumps.com

Email: myinfo@gpapumps.com

Authorized Distributor / Dealer:

TRIMCOR
TRIUMPH MACHINERY CORPORATION
THE PUMP, MOTOR & DRIVES SPECIALIST

www.trimcorph.com