



**CENTRIFUGAL PUMPS EU SERIES  
COMPLY TO DIN 24255 / EN733**

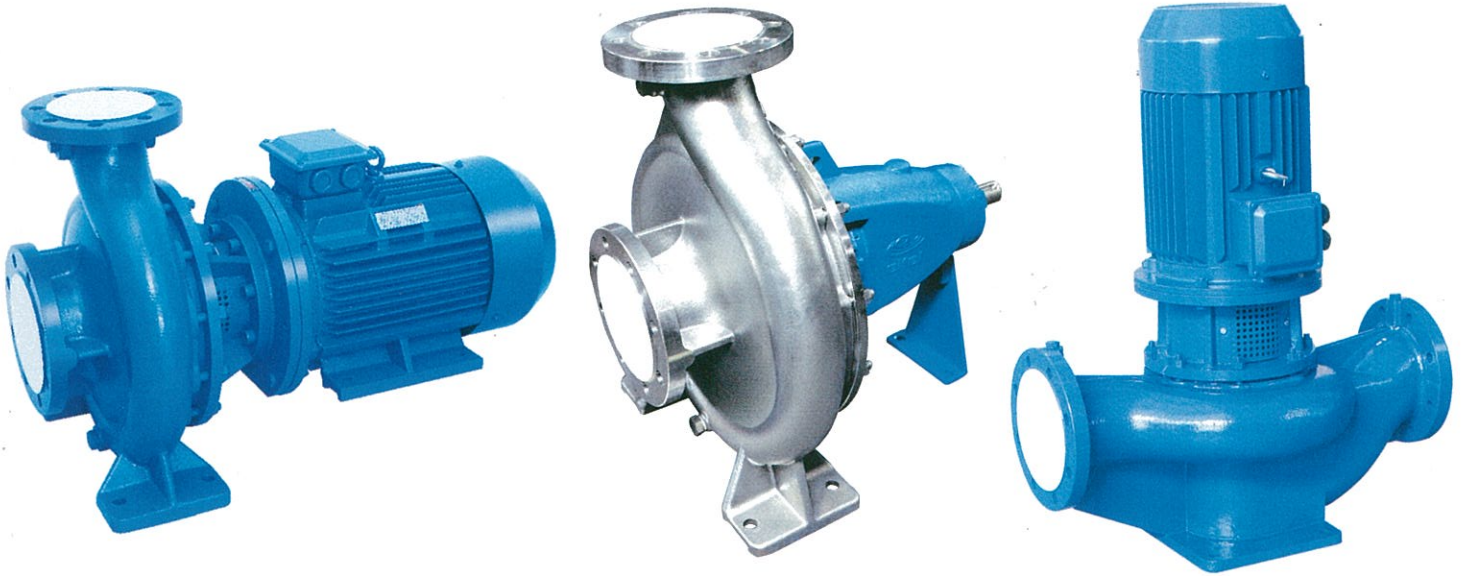
**GPA**

**GARBARINO PUMPS ASIA**



# GPA

GARBARINO PUMPS ASIA



## USES

For water, sea water, condensate, oils, chemical and petrochemical products

## MAIN APPLICATION

Dockyard's applications, power plants, air conditioning plants, aqueducts, effluent treatment plants, fire service, petrochemical plants.

## CONSTRUCTION

**PUMP** : Centrifugal type with a horizontal volute single-stage casing, single fluxe and axial aspiration.

**IMPELLER** : Closed type, high efficiency, statically and dynamically balanced. Axial thrust's equilibration done with blades and annular chamber located behind the impeller.

**MOUNTING SYSTEM** : Shaft with radial and thrust type self-lubricated or grease-lubricated bearing.

**SEAL** : Pumps can be fitted with soft packing or mechanical seal for special application. It is possible, for temperature above 150°C to 200°C, to adjoint a cooling jacket to the stuffing box. The mechanical seal supports temperature to the limit of 140°C without cooling systems; for higher temperature it is possible to use special mechanical seal.

## DISASSEMBLY BACK PULL OUT SYSTEM

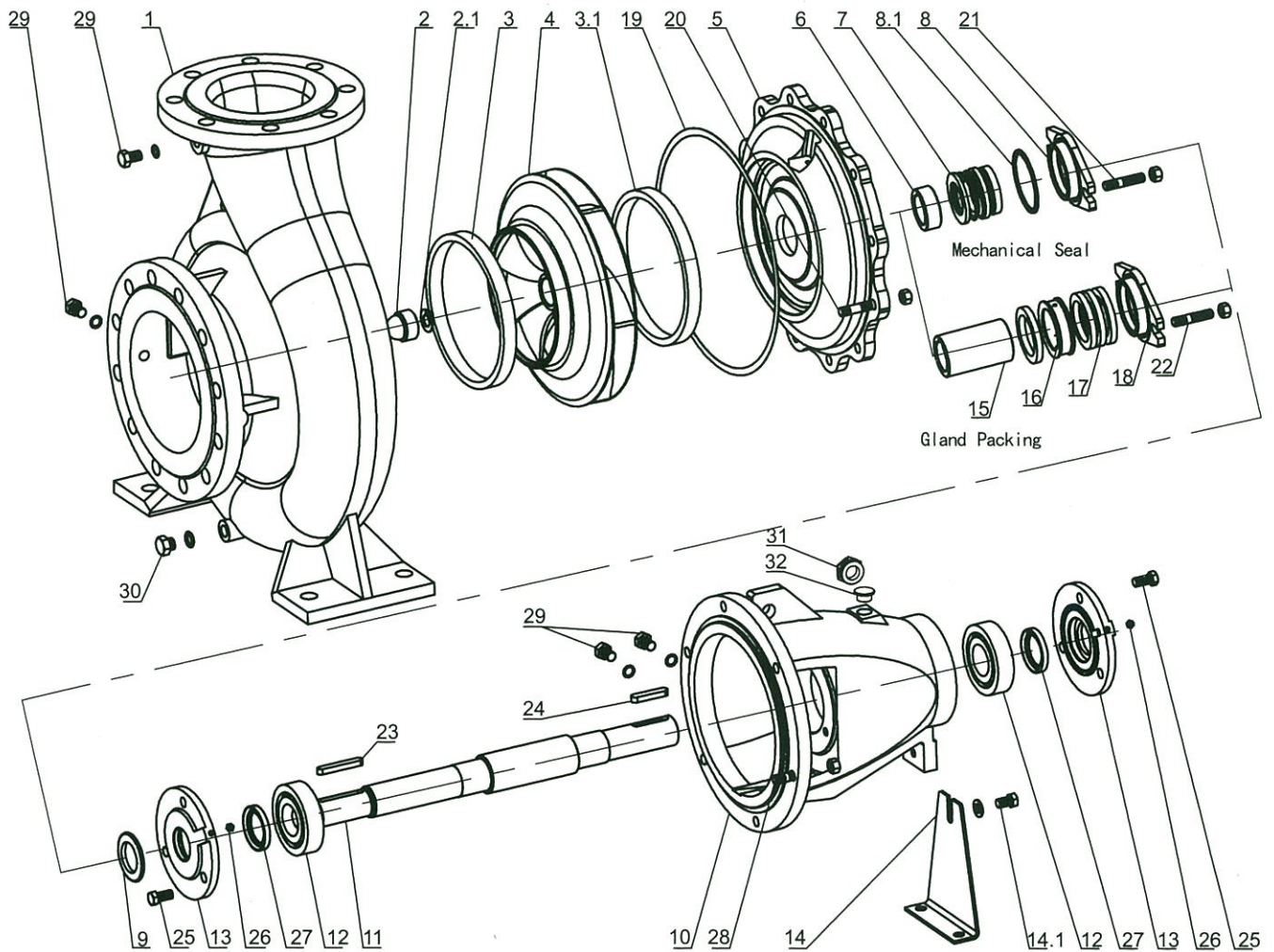
Using a special flexible coupling is possible to remove the rotating items without disassembling pipes, pump case and motor.

## BASE PLATE

The base plate normally is manufactured with electrowelded steel, the same can be done with drainage for incidental dripping. It is also possible, for special executions anti-magnetic and/or anti-vibration to manufacture the base plate with stainless steel AISI 316 and equipped with anti-vibration and/or anti-shock mounting resilient.



# EU Series Exploded View & Parts List



Code	Part Name
1	Casing
2	Impeller Nut
2.1	Lock Washer
3	Wear Ring ( Front)
3.1	Wear Ring ( Back)
4	Impeller
5	Casing Cover
6	Shaft Spacer
7	Mech.Seal
8	Seal Cover
8.1	O-ring
9	Rubber Slinger
10	Bearing Frame

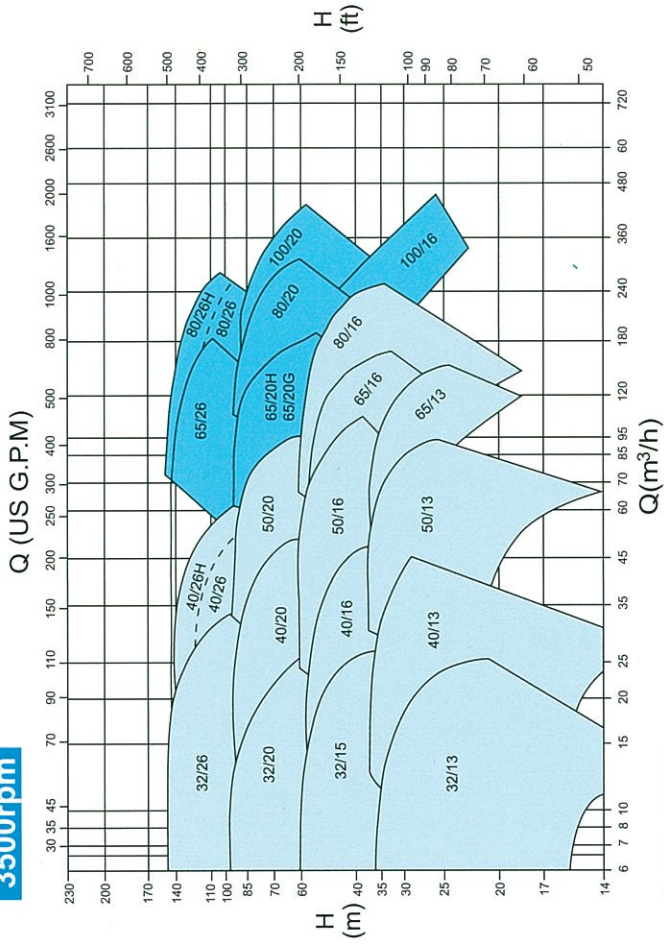
Code	Part Name
11	Shaft
12	Bearing
13	Bearing Cover
14	Support Foot
14.1	Bolt & Nut
15	Packibg Sleeve
16	Packing Seal Cage
	Locating Sleeve
17	Gland Packing
18	Gland Cover
19	Casing Gasket
20	Stud & Nut
21	Stud & Nut

Code	Part Name
22	Stud & Nut
23	Key
24	Key
25	Screw Bolt
26	Oil Nipple
27	Felting
	Oil Seal
28	Stud & Nut
29	Plug & Washer
30	Plug & Washer
31	Oil Scale
32	Oil Cover

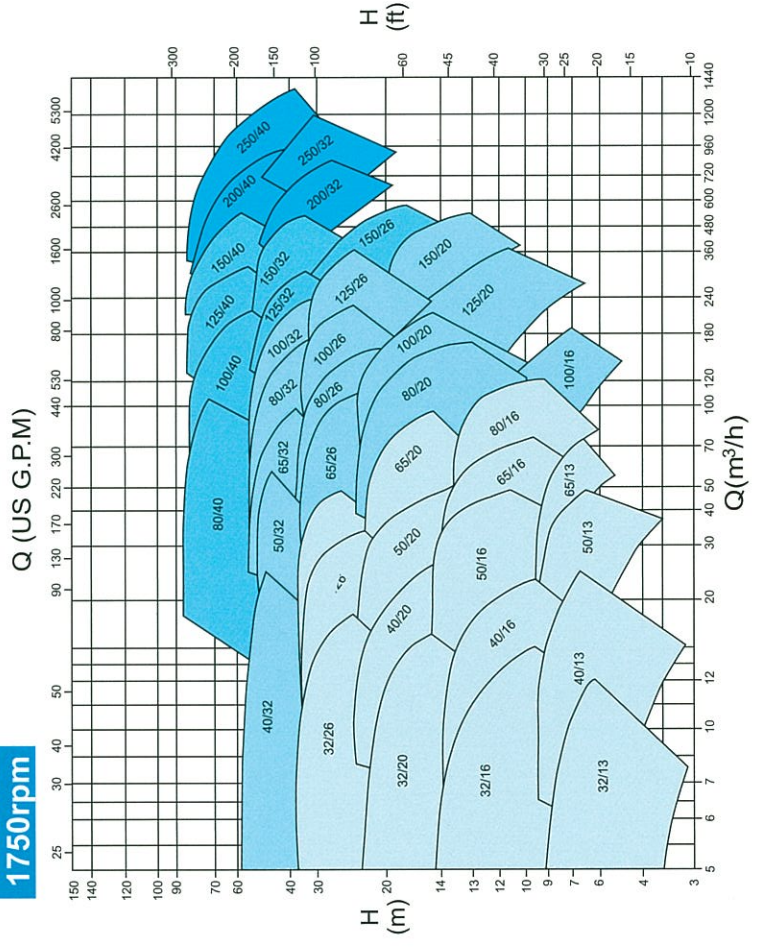


### Field Chart EU series (60Hz)

**3500rpm**

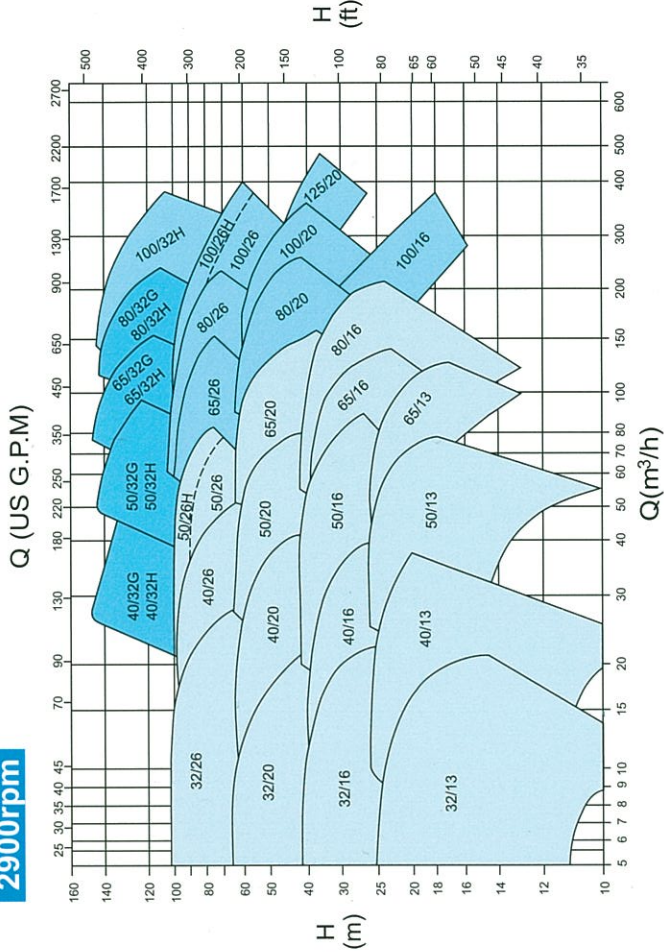


**1750rpm**

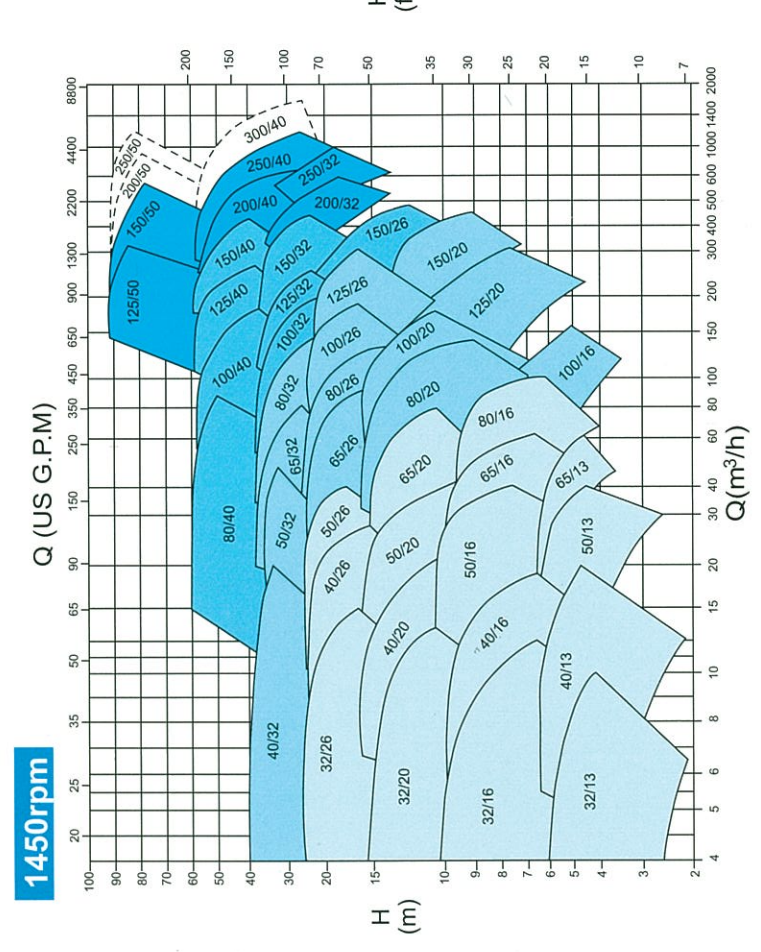


### Field Chart EU series (50Hz)

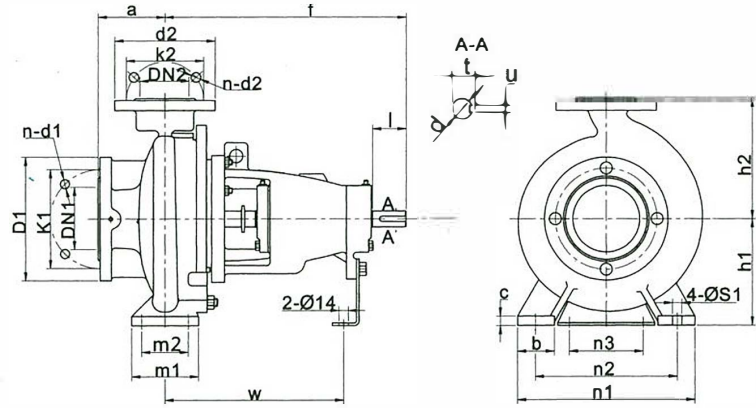
**2900rpm**



**1450rpm**







## © EU Installation Dimensions

NO	Model	Bearing		DN1	DN2	a	f	h1	h2	b	c	n3	m1	m2	n1	n2	S1	w	d	l	t	u									
		Inside	Dimension																												
1	EU32/13	25	32	50	80	360	112	140	50	14	100	100	70	190	140	14	267	24	50	27	8										
2	EU32/16						132	160						240	190																
3	EU32-20						160	180						240	190																
4	EU32/26	35	40	65	100	360	180	225	65	14	110	125	95	320	250	14	342	32	80	35	10										
5	EU40/13						112	140						210	160																
6	EU40-16						132	160						240	190																
7	EU40/20	45	40	100	100	360	160	180	50	14	100	100	70	240	190	14	367	42	110	45	12										
8	EU40/26						180	225						265	212																
9	EU40/32						180	225						320	250																
10	EU40/32H	25	50	65	125	470	200	250	65	14	110	125	95	345	280	14	342	32	80	35	10										
11	EU40/32G						200	200						320	250																
12	EU50/13						526	200						342	280																
13	EU50/16	35	40	65	100	360	132	160	50	14	100	100	70	240	190	14	267	24	50	27	8										
14	EU50/20						160	180						265	212																
15	EU50/26						160	200						320	250																
16	EU50/26G	45	50	65	125	470	180	225	65	14	125	95	345	280	14	367	42	110	45	12											
17	EU50/32						225	280						342							280										
18	EU50/32H						225	280						342							280										
19	EU50/32G	25	65	80	100	360	160	180	65	14	125	95	280	212	14	367	42	110	45	12											
20	EU65/13						180	225						267							24	50	27	8							
21	EU65/16						180	225						320							250										
22	EU65/20	35	40	65	125	470	200	250	65	14	160	120	400	315	18	342	32	80	35	10											
23	EU65/20G						225	280						367							42	110	45	12							
24	EU65/26						225	280						367							42	110	45	12							
25	EU65/32	45	50	65	100	465	180	225	65	14	160	120	400	315	18	367	42	110	45	12											
26	EU65/32H						200	250						342							280										
27	EU65/32G						200	250						342							280										
28	EU80/16	25	80	100	125	360	180	225	65	14	125	95	320	250	14	267	24	50	27	8											
29	EU80/20						250	280						345							280										
30	EU80/26						250	280						345							280										
31	EU80/32	35	65	80	100	470	250	315	80	16	110	160	120	440	340	18	342	32	80	35	10										
32	EU80/32H						250	315							367							42	110	45	12						
33	EU80/32G						250	315							367							42	110	45	12						
34	EU80/40	45	100	125	140	530	280	355	85	18	200	150	500	400	23	370	42	110	45	12											
35	EU100/16						200	250						80							15	200	150	500	400	23	370	42	110	45	12
36	EU100/20						200	250						80							15	200	150	500	400	23	370	42	110	45	12
37	EU100/26	35	100	125	140	470	225	280	80	16	160	120	400	315	18	342	32	80	35	10											
38	EU100/32						250	315						342							280										
39	EU100/40						250	315						342							280										
40	EU125/20	45	125	150	140	530	250	315	80	16	160	120	400	315	18	342	32	80	35	10											
41	EU125/26						280	355						370							42	110	45	12							
42	EU125/32						280	355						370							42	110	45	12							
43	EU125/40	55	150	200	160	530	315	400	25	25	200	150	660	500	23	500	48	110	51	14											
44	EU125/50						342	32						80							35	10									
45	EU150/20						342	32						80							35	10									
46	EU150/26	45	150	200	160	530	250	355	100	18	200	150	660	560	23	515	60	140	64	18											
47	EU150/32						280	400						370							42	45	12								
48	EU150/40						280	400						370							42	45	12								
49	EU150/50	55	200	250	180	530	315	450	22	22	220	170	600	480	28	505	48	110	51	14											
50	EU200/26						370	42						45							12										
51	EU200/32						370	42						45							12										
52	EU200/40	65	250	300	220	555	315	450	20	30	240	190	750	650	23	515	60	140	64	18											
53	EU200/50						392	42						45							12										
54	EU250/32						392	42						45							12										
55	EU250/40	55	250	300	220	691	355	520	150	26	110	250	200	660	510	28	525	48	110	51	14										
56	EU250/50						682	400							560							516	48	110	51	14					
57	EU300/40						720	450							670							120	32	140	240	190	750	650	23	515	60



**TRIUMPH MACHINERY CORPORATION**  
**THE PUMP, MOTOR & DRIVES SPECIALIST**